

Top 10 alerts to prevent an underperforming fleet

These systems offer more than just notifications; they provide useful input for improving performance. Every alert is an opportunity to fine-tune operations, boost safety, and increase efficiency. Check out our top 10 alerts, chosen based on current customer usage, to explore how they can enhance your vessel performance.





Contents

1 Diesel Consumption Alert	2
2 Fuel Type Alert	4
3 Main Engine Performance Alert	5
4 Shaft Power Limit Alert	8
5 Boiler Usage Alert	9
6 Geofencing Alert	10
7 Vessel Standstill Alert	11
8 Weather Condition Alert	12
9 Marine Life Proximity Alert	13
10 Emission Compliance Alert	14
11 Checklist	16

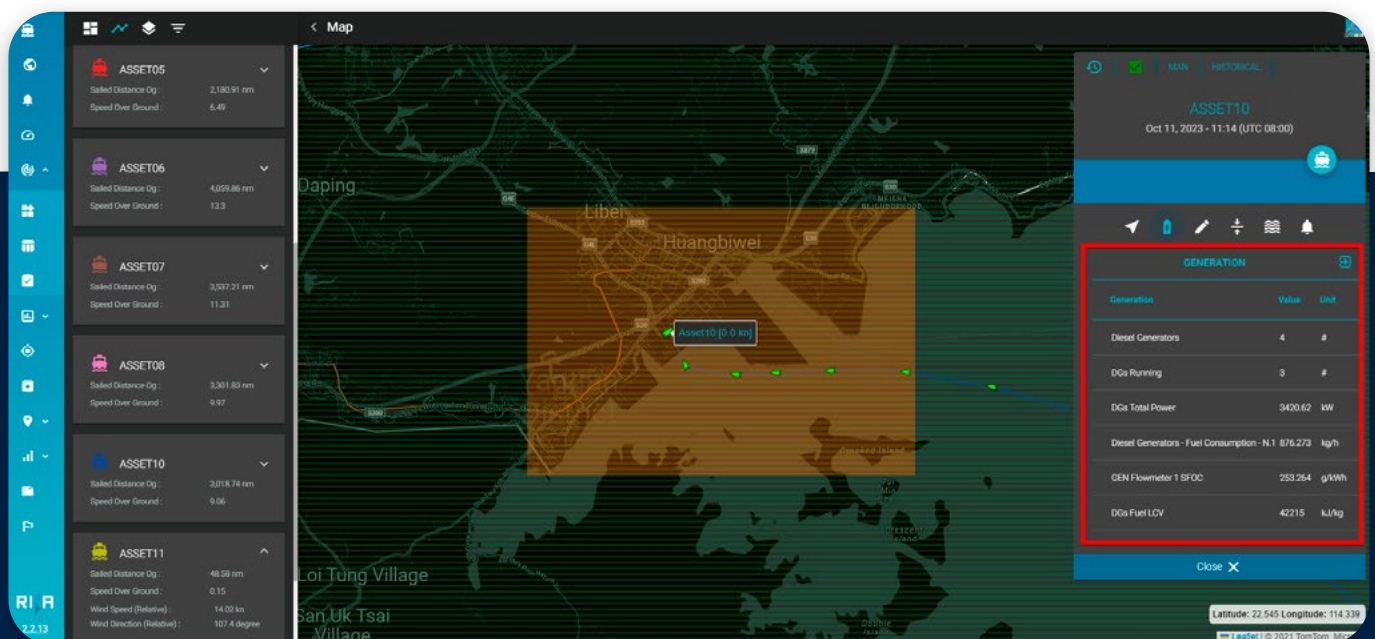
Diesel Consumption Alert

Monitor your ship's diesel consumption in port to adjust generator usage efficiently and enhance your CII rating.

Get alerted when auxiliary engines or generators are running unnecessarily, leading to extra diesel consumption. The dashboard helps you identify which diesel engines are on or off, aiding in fuel saving efforts. Additionally, it allows you to monitor the Mean Rated Consumption (MRC) and power output of each generator in a single view, ensuring optimal usage, especially when running below 55% capacity where shutting down one engine might be feasible.



View the ship's latest AIS position on the map and check the number of engines operating (displayed on the right) to assess if all running engines are needed while in port. This feature aids in reducing diesel usage and saving costs.

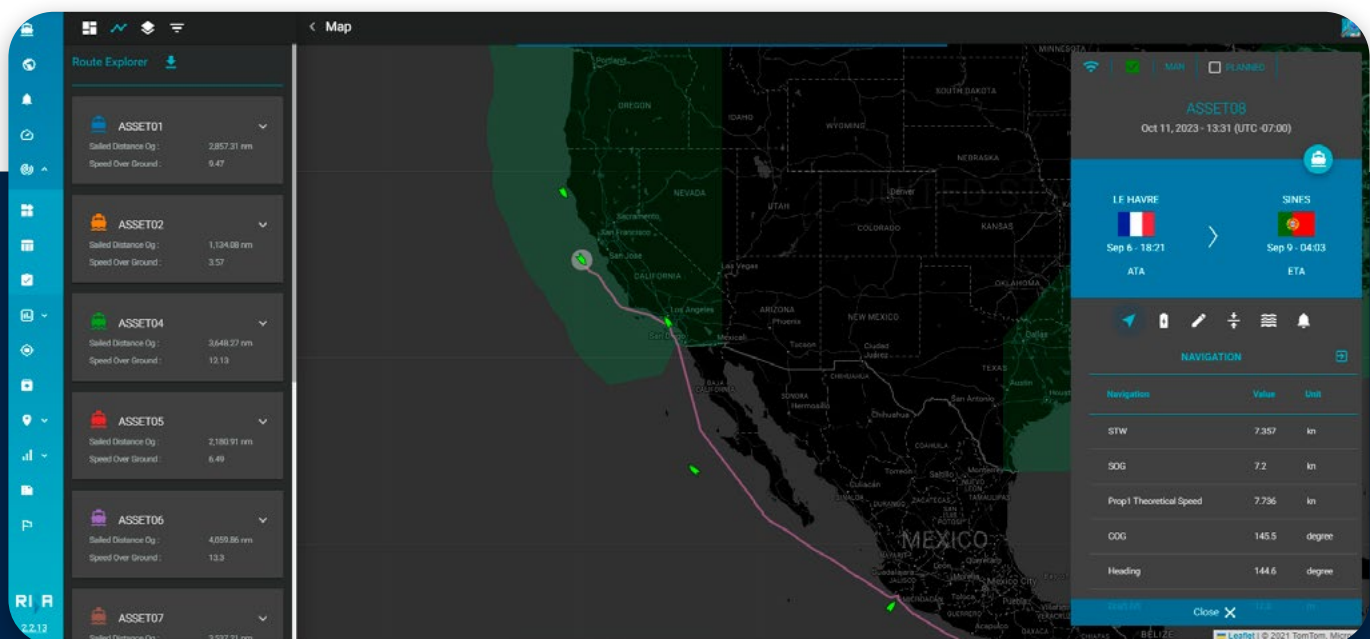


Fuel Type Alert

Receive warnings when entering or exiting ECA zones with the wrong fuel type.

Get notified when a vessel enters or exits an ECA (Emission Control Area) to maintain regulatory compliance and avoid fines, or to optimize fuel costs if the wrong fuel type is used outside the ECA zone.

The dashboard displays the latest AIS position along with an ECA area map layer, allowing you to easily track vessels nearing or leaving an ECA boundary, crucial for managing fuel types in ECA zones where connected fuel costs are higher.



Main Engine Performance Alert

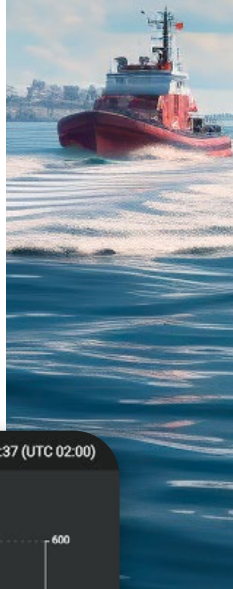
Track and optimize the main engine's power consumption, fuel use, and RPM.

Stay ahead in managing engine performance and optimization. Receive notifications when a Main Engine (ME) operates outside the specified efficiency range.

On the propulsion dashboard, you can view key variables like RPM and fuel type to quickly spot any thresholds that are exceeded, ensuring optimal engine performance at all times.



Use the timeline graph to investigate and evaluate the timing when power changes, such as speed or RPM. The graph editor allows you to construct custom graphs with any engine parameters or variables. This feature enables you to analyze the past 8 hours of high-frequency sensor data, offering the flexibility to overlay different variables for comprehensive evaluation.



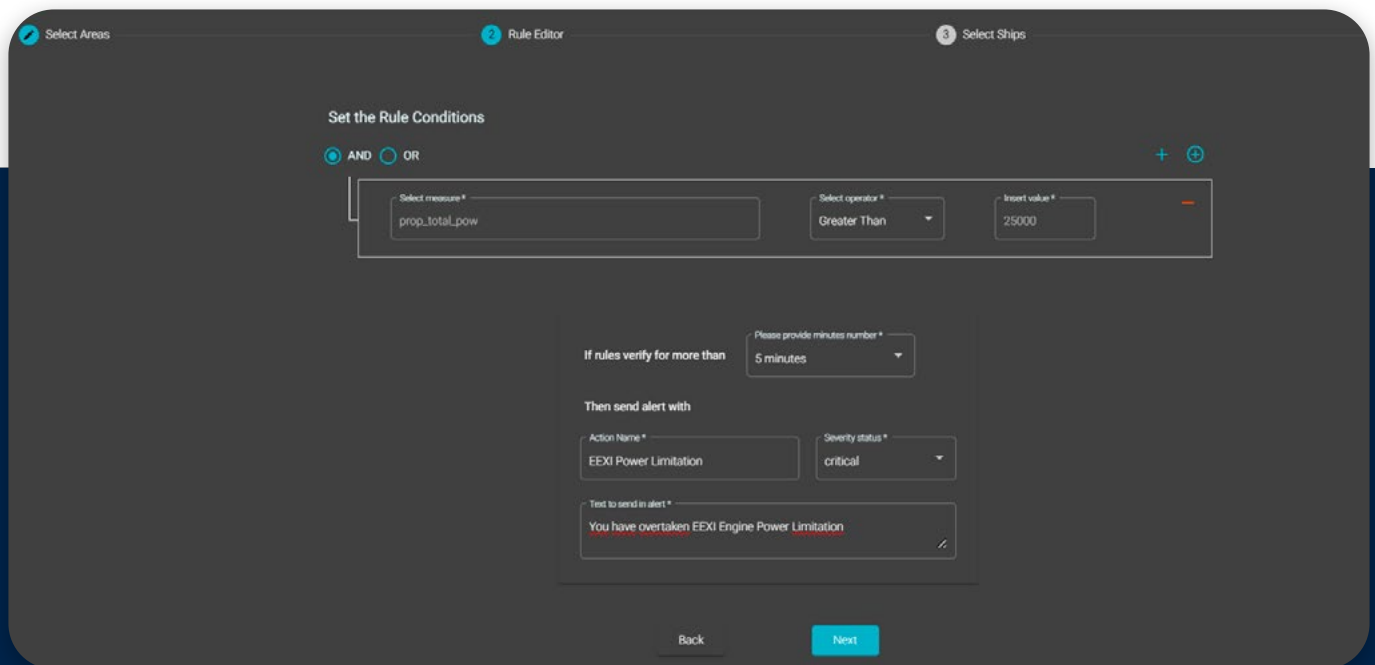
The Propulsion Assistance alert determines if your vessel is operating at its best efficiency. It quickly highlights when vessel performance deviates from the optimal range and thermodynamic targets. Consolidate all essential data, including operational, fuel, weather, and efficiency metrics, into a single, comprehensive dashboard for easy monitoring.



Shaft Power Limit Alert

Be warned if shaft power exceeds EEXI maximum limits.

Stay compliant and efficient with our Shaft Power Limit Alert system. Receive immediate notifications if your vessel's shaft power exceeds EEXI limits or predefined thresholds. Through the real-time Propulsion Dashboard, you can quickly assess how much the limits have been exceeded, enabling prompt and informed decision-making for optimal vessel performance and regulatory compliance.



The screenshot shows the 'Rule Editor' interface for setting up a Shaft Power Limit Alert. The interface is divided into three main sections: 'Select Areas', 'Rule Editor', and 'Select Ships'. The 'Rule Editor' section is currently active and contains the following fields:

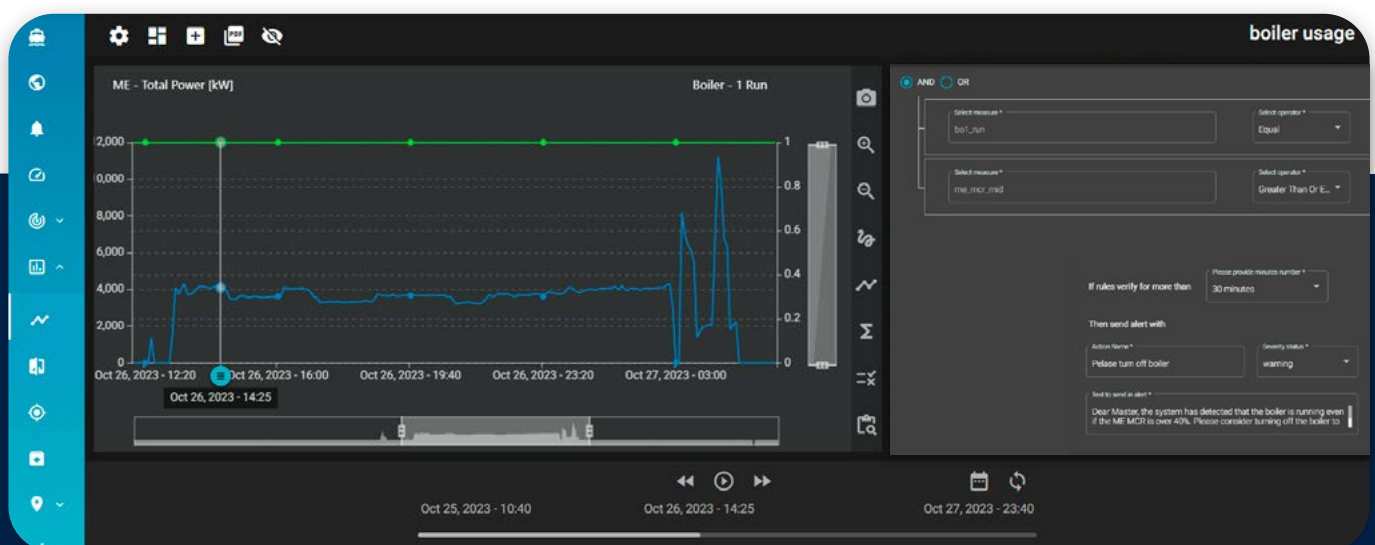
- Set the Rule Conditions:**
 - Logic: ☒ AND ☐ OR
 - Select measure *:
 - Select operator *:
 - Insert value *:
- If rules verify for more than:**
 - Please provide minutes number *:
- Then send alert with:**
 - Action Name *:
 - Severity status *:
 - Text to send in alert *:

At the bottom of the interface, there are 'Back' and 'Next' buttons.

Boiler Usage Alert

Monitor boiler status in case the Main Engine power is above a certain threshold.

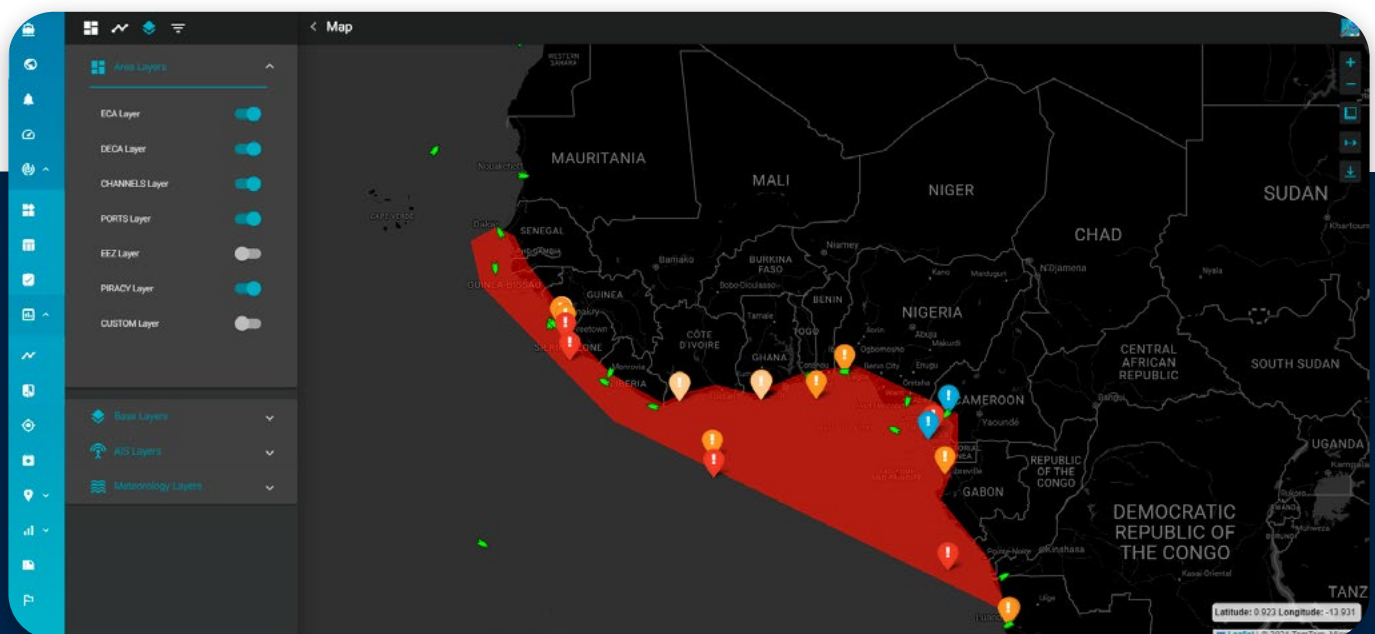
Set up an alert to save fuel and efficiently use your economizer. This alert is activated when the system detects the boiler running unnecessarily, while the Main Engine generates sufficient power for the economizer. This helps avoid fuel wastage and ensures optimal use of the economizer.



Geofencing Alert

Get notifications when approaching high-risk areas like war zones or piracy-prone regions.

Get notified when a vessel nears or enters a high-risk area, such as zones prone to piracy or conflict. On our global map, you can see the vessel's latest AIS position and the outlined high-risk zones, helping you to avoid potential incidents and reduce insurance costs.



Vessel Standstill Alert

Be alerted if the vessel halts unexpectedly at sea while still burning fuel.

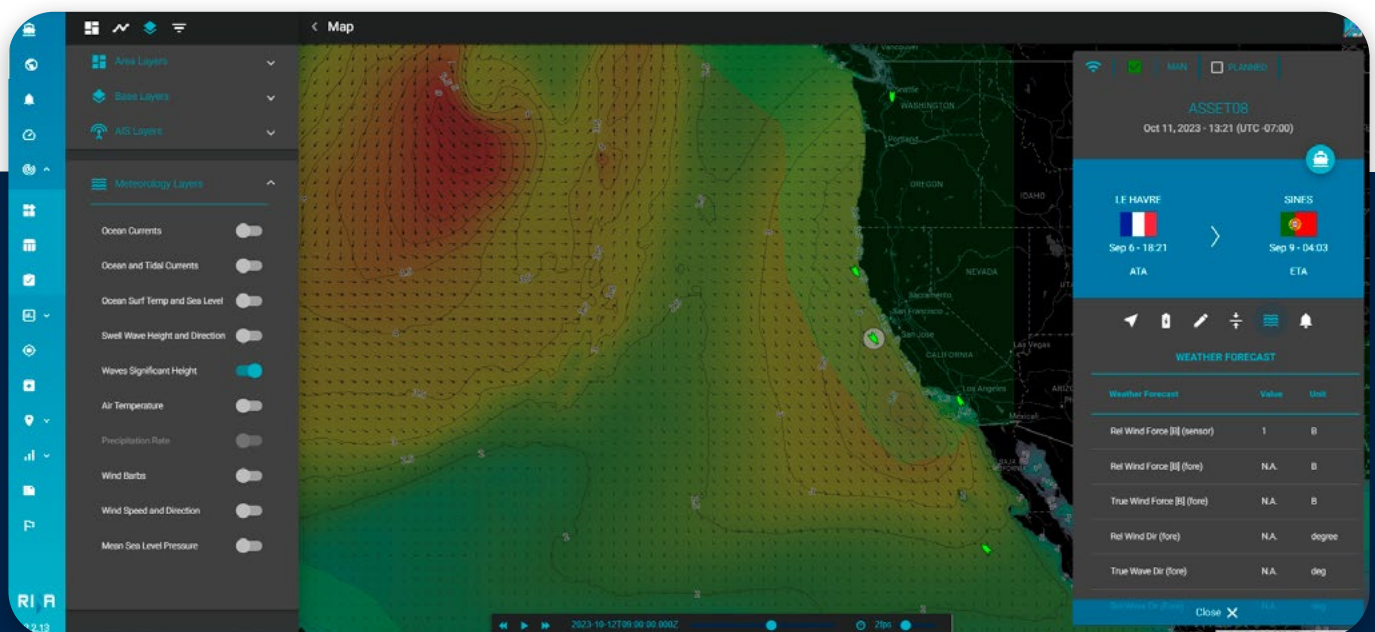
The Vessel Standstill Alert notifies if a ship stops unexpectedly or remains idle for an unusual time while still using fuel. This alert is key for monitoring drifts and helps in reducing emissions, ensuring environmentally responsible maritime operations while reducing the impact on Carbon Intensity Indicator.



Weather Condition Alert

Adjust and optimize voyages based on prevailing weather conditions for safety.

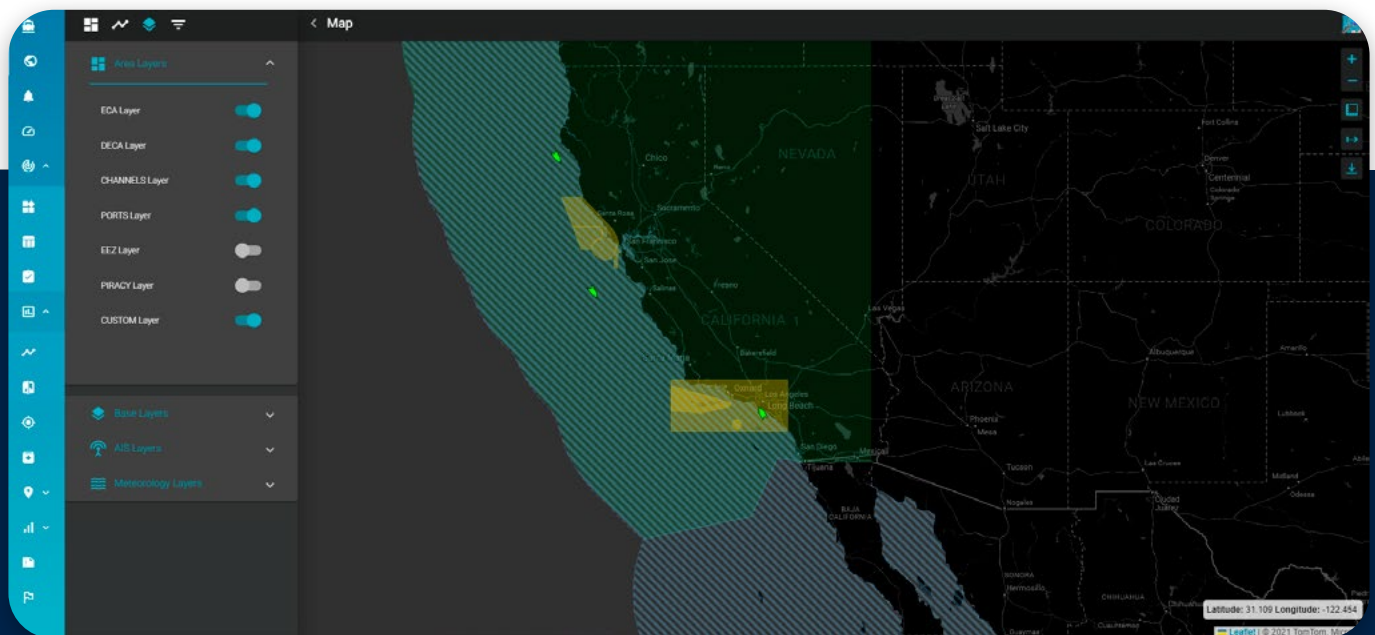
Receive notifications when a vessel encounters concerning weather or sea conditions. Tailor the weather and sea thresholds to suit the specific requirements of your vessel and its cargo. On our map, you can review the current weather and sea conditions and easily scroll through the forecast to stay prepared and informed.



Marine Life Proximity Alert

Receive notifications when entering regions frequented by whales or dolphins, prompting speed adjustments.

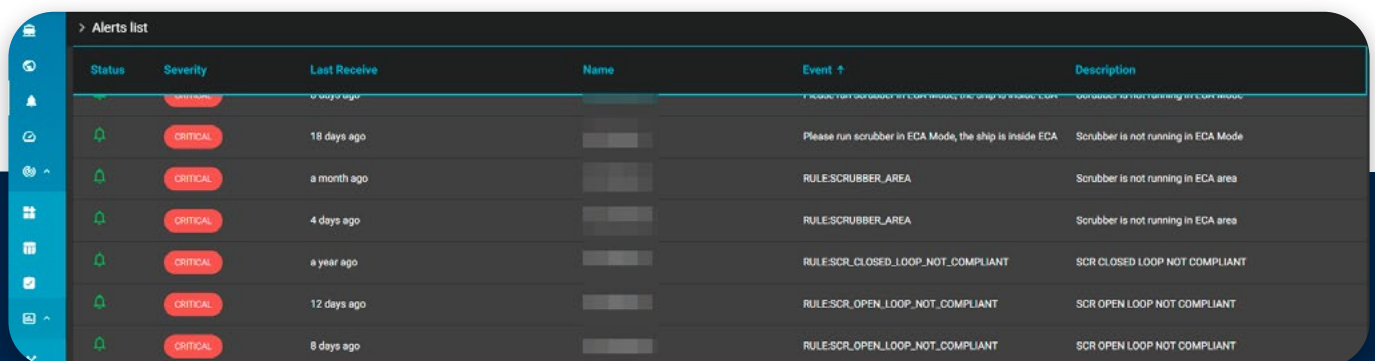
Receive an alert when a vessel enters a zone with voluntary or mandatory slow-down recommendations for whale protection. This notification allows you to verify compliance and ensure proper execution of these critical environmental measures.



Emission Compliance Alert

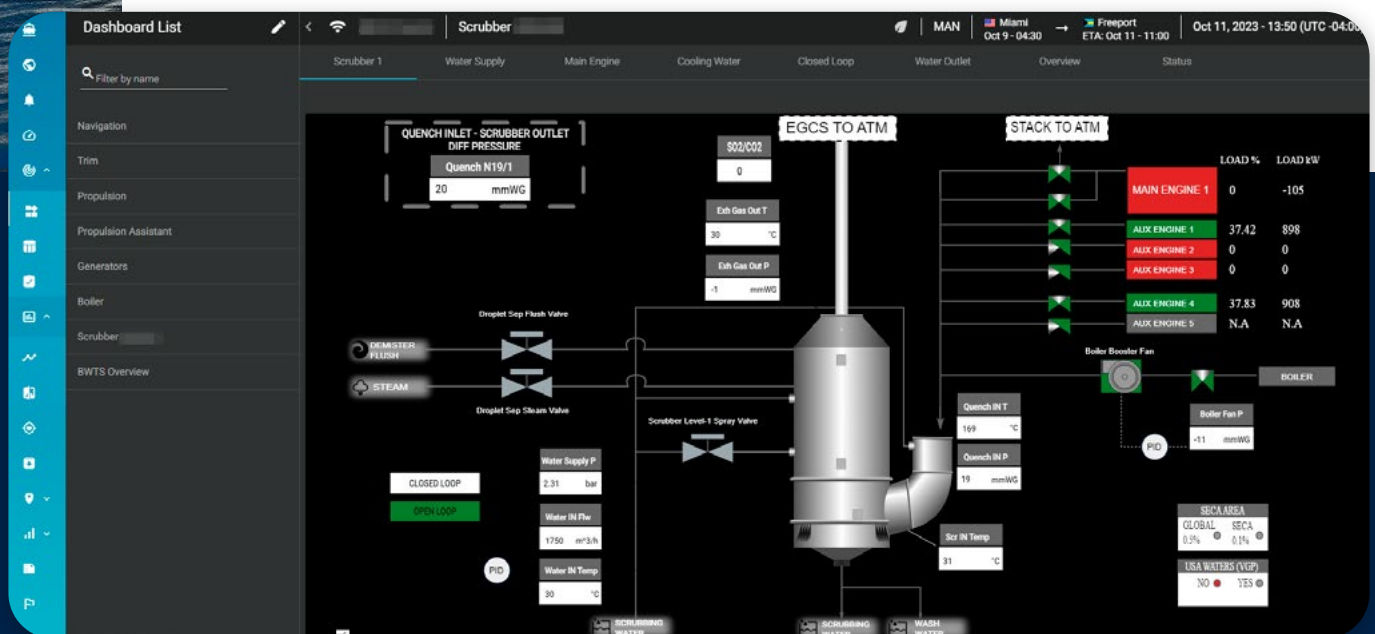
Activate or deactivate scrubbers as needed to ensure emission compliance and avoid fines.

Access all scrubber-related alerts in one place within our Alert section. Stay informed with notifications if a scrubber is used incorrectly, ensuring adherence to both regulatory standards and company policies.



Status	Severity	Last Receive	Name	Event ↑	Description
	CRITICAL	18 days ago		Please run scrubber in ECA Mode, the ship is inside ECA	Scrubber is not running in ECA Mode
	CRITICAL	a month ago		RULE-SCRUBBER_AREA	Scrubber is not running in ECA area
	CRITICAL	4 days ago		RULE-SCRUBBER_AREA	Scrubber is not running in ECA area
	CRITICAL	a year ago		RULE-SCR_CLOSED_LOOP_NOT_COMPLIANT	SCR CLOSED LOOP NOT COMPLIANT
	CRITICAL	12 days ago		RULE-SCR_OPEN_LOOP_NOT_COMPLIANT	SCR OPEN LOOP NOT COMPLIANT
	CRITICAL	8 days ago		RULE-SCR_OPEN_LOOP_NOT_COMPLIANT	SCR OPEN LOOP NOT COMPLIANT

In our dedicated scrubber dashboard, you can easily monitor and evaluate the performance and efficiency of your scrubbers to ensure optimal operation.





Top 10 alerts

- 1 **Diesel Consumption Alert:** Monitor in-port diesel use to optimize generators and improve your CII rating.
- 2 **Fuel Type Alert:** Receive alerts for incorrect fuel when entering or leaving ECA zone.
- 3 **Main Engine Performance Alert:** Track and optimize main engine power, fuel use, and RPM.
- 4 **Shaft Power Limit Alert:** Get alerts if shaft power exceeds EEXI limits.
- 5 **Boiler Usage Alert:** Monitor boiler status when Main Engine power exceeds a set threshold.
- 6 **Geofencing Alert:** Receive alerts when nearing high-risk areas like war zones or piracy zones.
- 7 **Vessel Standstill Alert:** Get alerts if the vessel stops unexpectedly at sea while still consuming fuel.
- 8 **Weather Condition Alert:** Optimize voyages based on current weather for safety.
- 9 **Marine Life Proximity Alert:** Get alerts in whale or dolphin zones to prompt speed adjustments.
- 10 **Emission Compliance Alert:** Control scrubbers as needed to stay emission compliant and avoid fines.



SERTICA is the ultimate all-in-one solution for ship management, enabling shipping companies to optimize maintenance, procurement, HSQE, crewing, performance, vessel reporting, logbooks, and fleet monitoring.

With more than 3,000 vessels running SERTICA, our system continuously evolves to meet industry standards, keeping fleets compliant, efficient, and prepared for current and future challenges.

But SERTICA is more than just software. Built in collaboration with leading shipping companies, it combines a solid technological platform with comprehensive training, seamless implementation, expert project management, and dedicated support

With SERTICA, you get a trusted partner in fleet digitalization. We go beyond expectations, ensuring your fleet operates at peak performance while meeting regulatory requirements.

Developed by RINA and backed by a global network of 200+ offices and 6,000 industry experts, SERTICA provides the maritime expertise and support needed to optimize your operations.

RINA DIGITAL SOLUTIONS

+45 7214 1214

sertica@rina.org

sertica.com